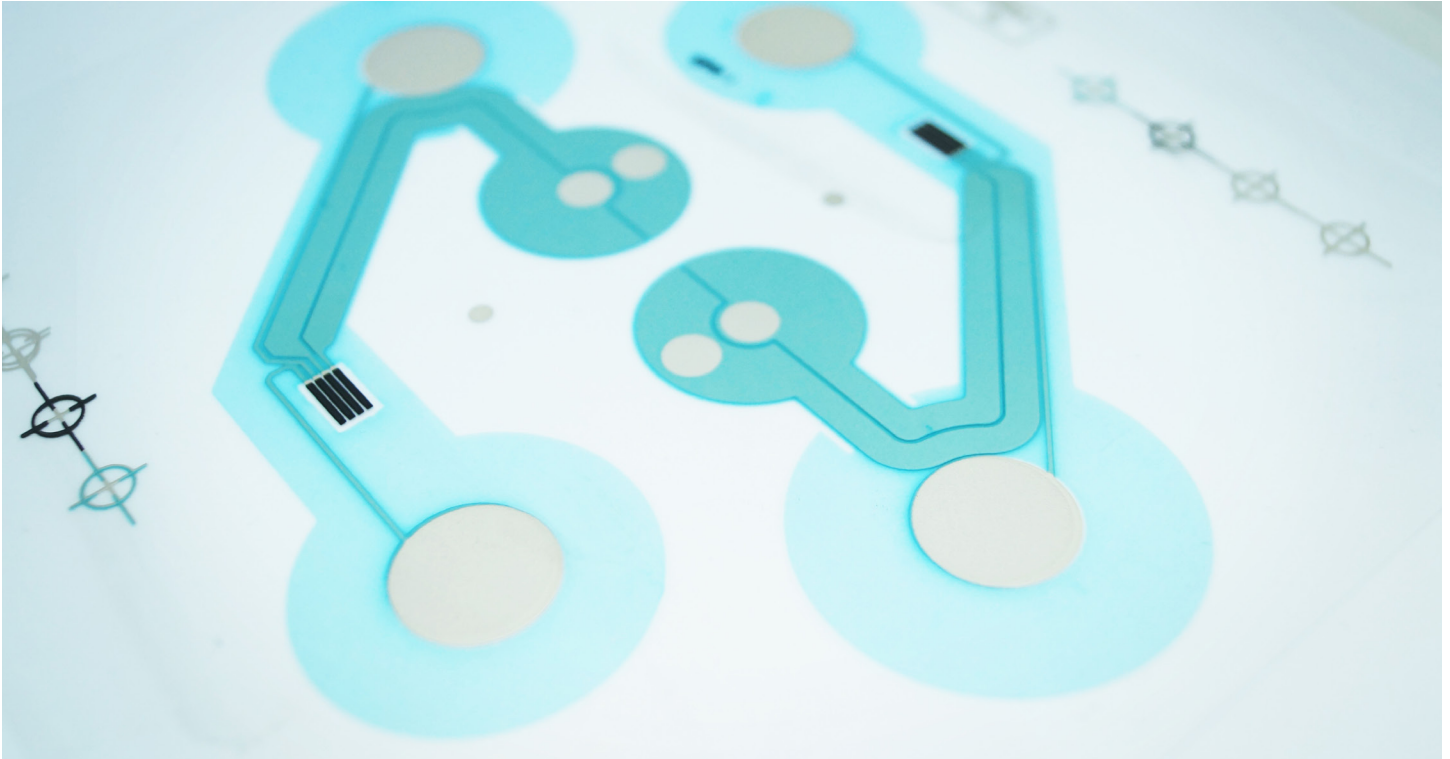


Medical Sensors



Flexible and Versatile Backlighting Film

e₂ip's medical sensors were designed with precision, budget and reliability in mind. Ideal for disposable devices, the medical sensors can be tailored to desired customer specifications. They are often used in applications such as ECG electrodes, therapeutic products, blood glucose measurement devices and can also act as wearable sensors.

Screen printed on a polymer film, the sensors are remarkably thin and flexible. They can also be printed on stretchable substrates, allowing for greater design and application possibilities.

Compliance with medical industry standards is always assured with e₂ip' rigorous Quality Assurance testing.

Key Features & Benefits

- Thin
- Stretchable
- Skin compatible
- Cost-effective
- Easy to use



ECG Electrodes

Real-time data provided by the sensors track respiration rate and cardiac vital signs for continuous monitoring and analysis by medical staff.



BLOOD SUGAR MEASURING DEVICE

Measurement of glucose level performed through printed sensors

Technical Specifications

Printing Process	Silk-Screen Printing
Available inks	Silver flake, silver molecular, silver chloride, carbon, dielectric, PEDOT, PTC and graphic inks
Substrates	Films (0,13 mm – 0,51 mm): PET (polyester), PEN, PC,
Sheets	(0,51 mm & up): PET, PC, TPU
Maximum circuit & substrate size	Circuit: 550x550mm Substrate: 600x600mm
Line width and spacing	On PET with Ag/AgCl or Medical compatible silver: 0,25/0,25mm On TPU = 0,5/0,5mm Sheet resistance of silver is down to 0,45 mOhms/sq Tolerance is +/- 15%
Electrical Interface	Nicomatic & Amp 2,54 mm headers, ZIF tail termination down to 0,50 mm. Other tail terminations available on request.



**Transforming the surfaces we
touch in our everyday lives.**

For more information, speak with
a specialist at e₂ip technologies.

We're always looking forward to
hearing from you!

info@e2ip.com
1 866-631-6662

750 Marcel-Laurin, Suite 375
St-Laurent, Québec
H4M 2M4
Canada

e2ip.com

